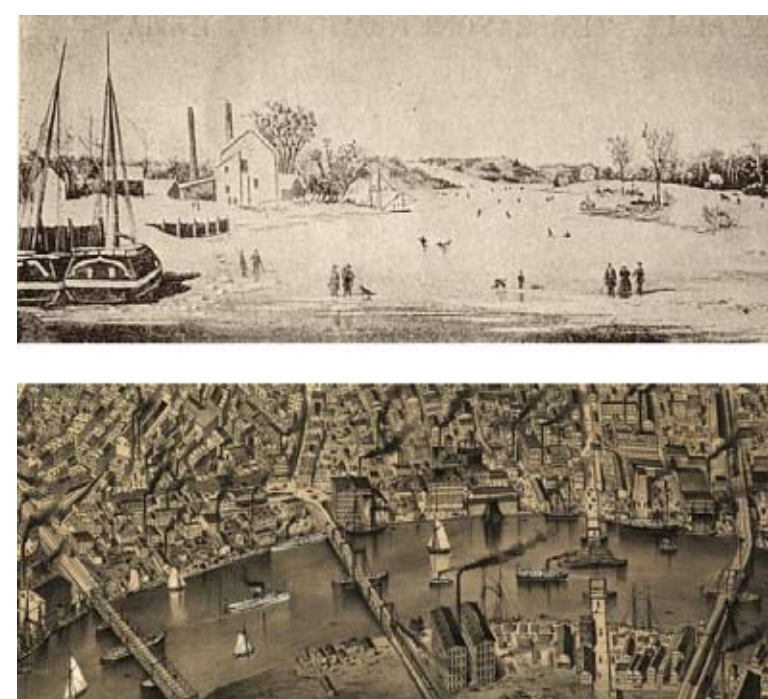


# NWC



## Newark Visitor's Center - Portal to the City on the Meandering Passaic

The City of Newark was established along the Passaic River in 1666. The sinuous form of the Meandering River creates a **definitive city edge, which evolved throughout the City's history** – from a bustling industrial center to a series of underutilized parking zones. In contrast to the surrounding city, now based on a service economy with sports and cultural facilities attracting regional residents, the proposed site lags behind in urban revitalization, making it an ideal location for the new Visitor's Center. **Witnessing the transformation of its edge, the River remains a constant, evoking movement by its nature.**

Sited adjacent to the future Riverfront Park, the Newark Visitor's Center will serve as a threshold from the dense high-rise fabric of Downtown Newark to many diverse neighborhoods, such as the Ironbound. **As part of the evolving waterfront open space network, the Center is a landscape of memory of Newark's past to the future.**

The Newark Visitor's Center is a dramatic landform that mediates the scale of Downtown and the Ironbound. Its shape, derived from the Meandering Passaic, includes a sweeping profile and sinuous lines of glazing. **Contemporary in form, the transparency allows an onlooker's gaze to flow through the Center, from the City to the River.**

The Center's curvilinear form promotes ease of movement. **Just as the Meandering River erodes its edges and collects deposits, the Center's layout creates spaces for people to collect and gather.** The program spaces are set back under a green roof. These volumes, like stones along a river edge, are wrapped in maps of Newark and display event information. In the evening, video screens emblazon the night sky and appear through the curving ribbons of glazing the landscape. **Like eyelids, the Center's openings reveal something special about Newark!** A place to learn about Newark's past, its present, and a view to its green and sustainable future, the Center is a landscape of opportunity – and like the River itself, a witness to City's transformation through time.

Inside, beneath the sweeping green roof, all of the building's elements are on view. Permanent program spaces include an auditorium, gallery, store and café, but also include flexible spaces that can be reshaped as the need arises. **The green roof and ample glazing mesh indoor with outdoor, highlighting a landscape of natural beauty, as it meanders in time with the Passaic – as a portal to the great City of Newark.**



site plan

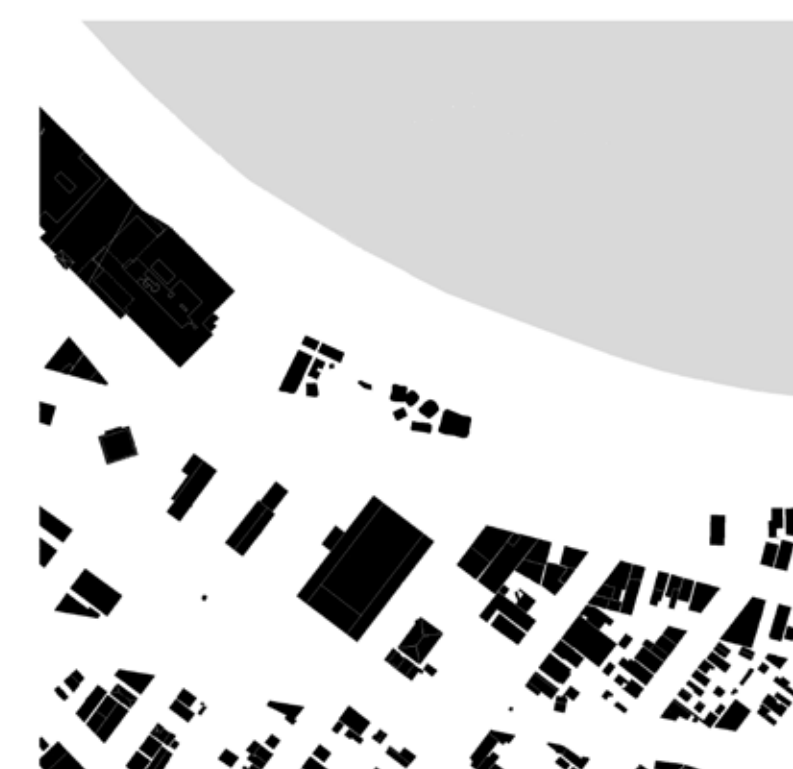
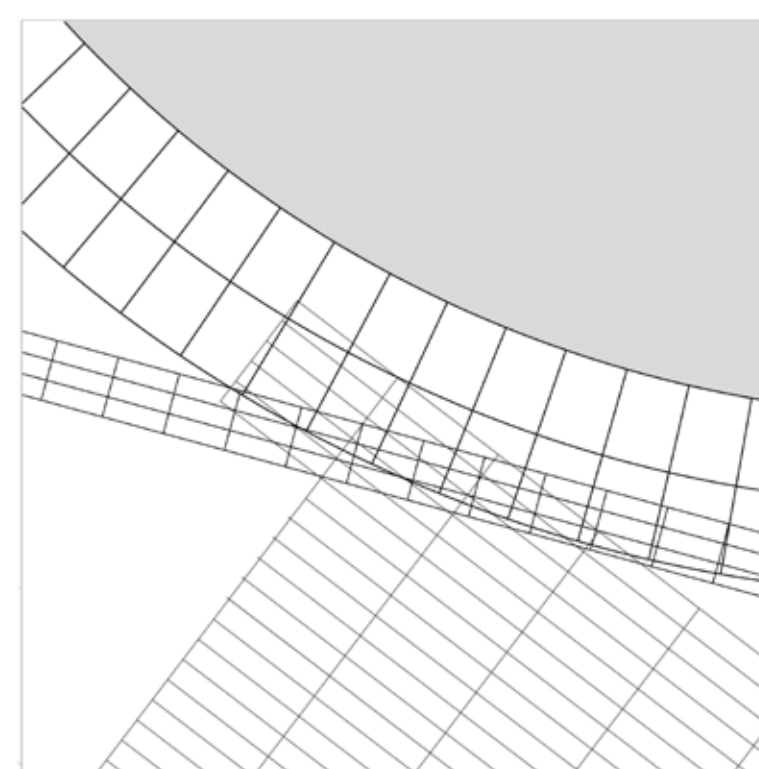
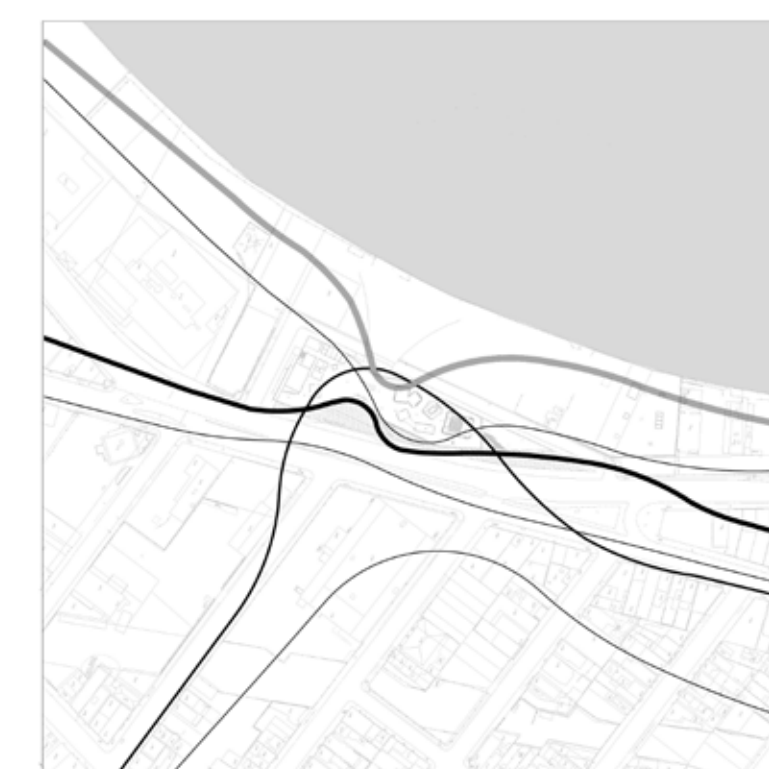


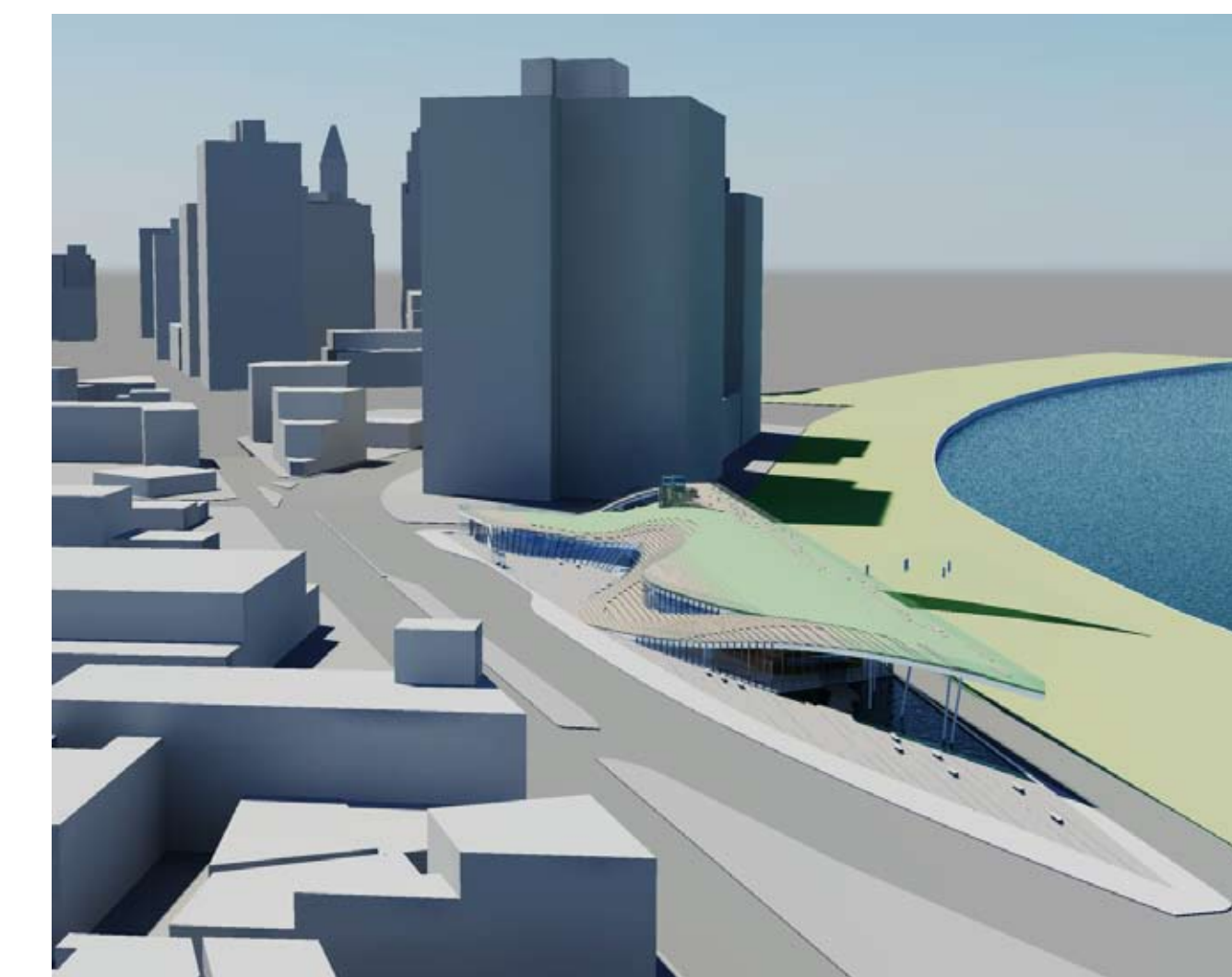
figure / ground



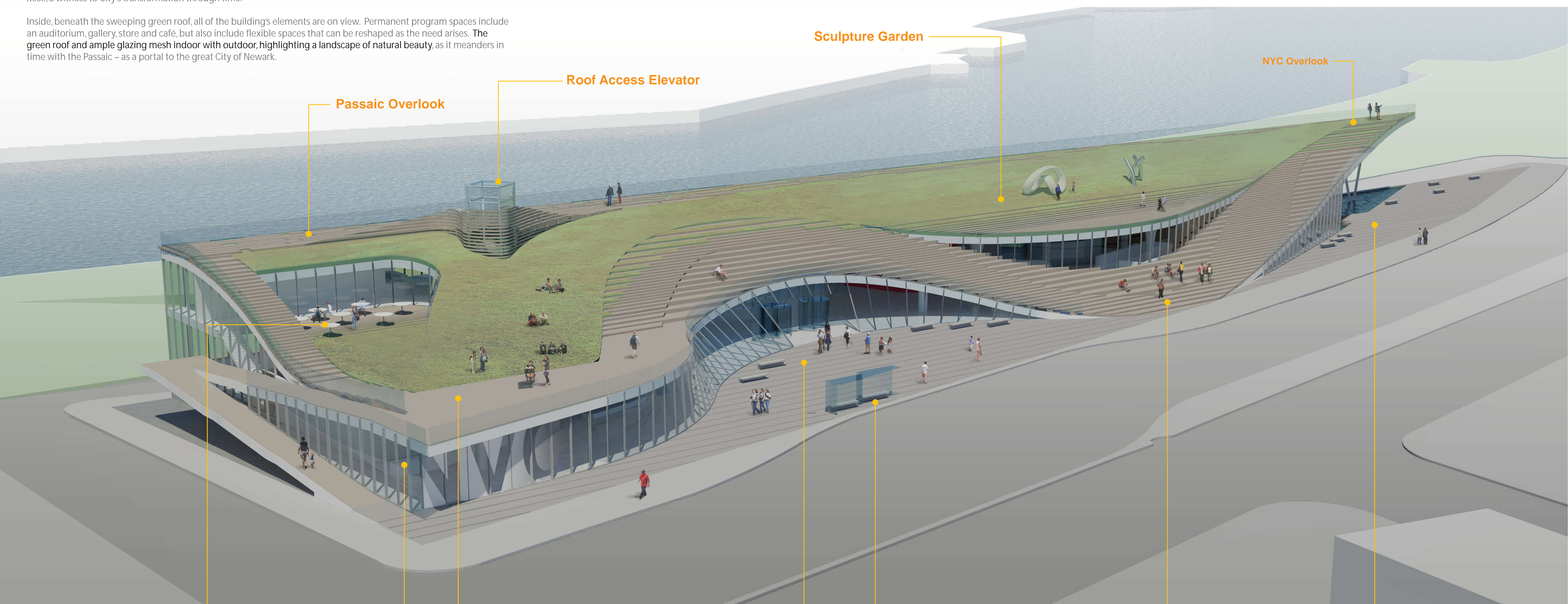
city grid / fabric



meandering / flow



view looking west



Open Air Cafe



Bike Tour / Rentals



Informal Performance Area



Open Plaza with Main Entry

Tour Bus Drop-off Pick-up Area / City Bus Stop



Wood Steps / Urban Terrace

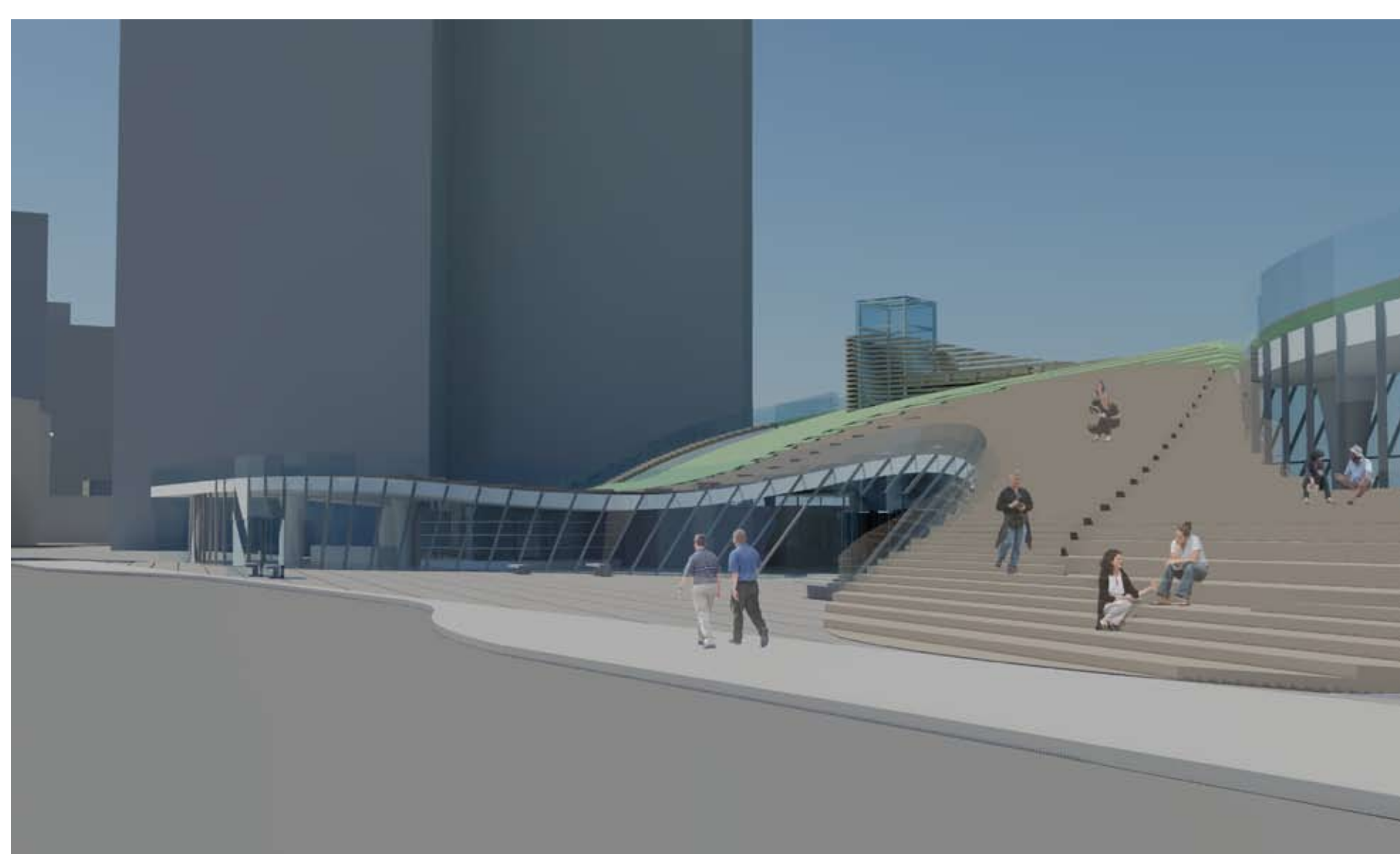
Open Plaza with Water Feature



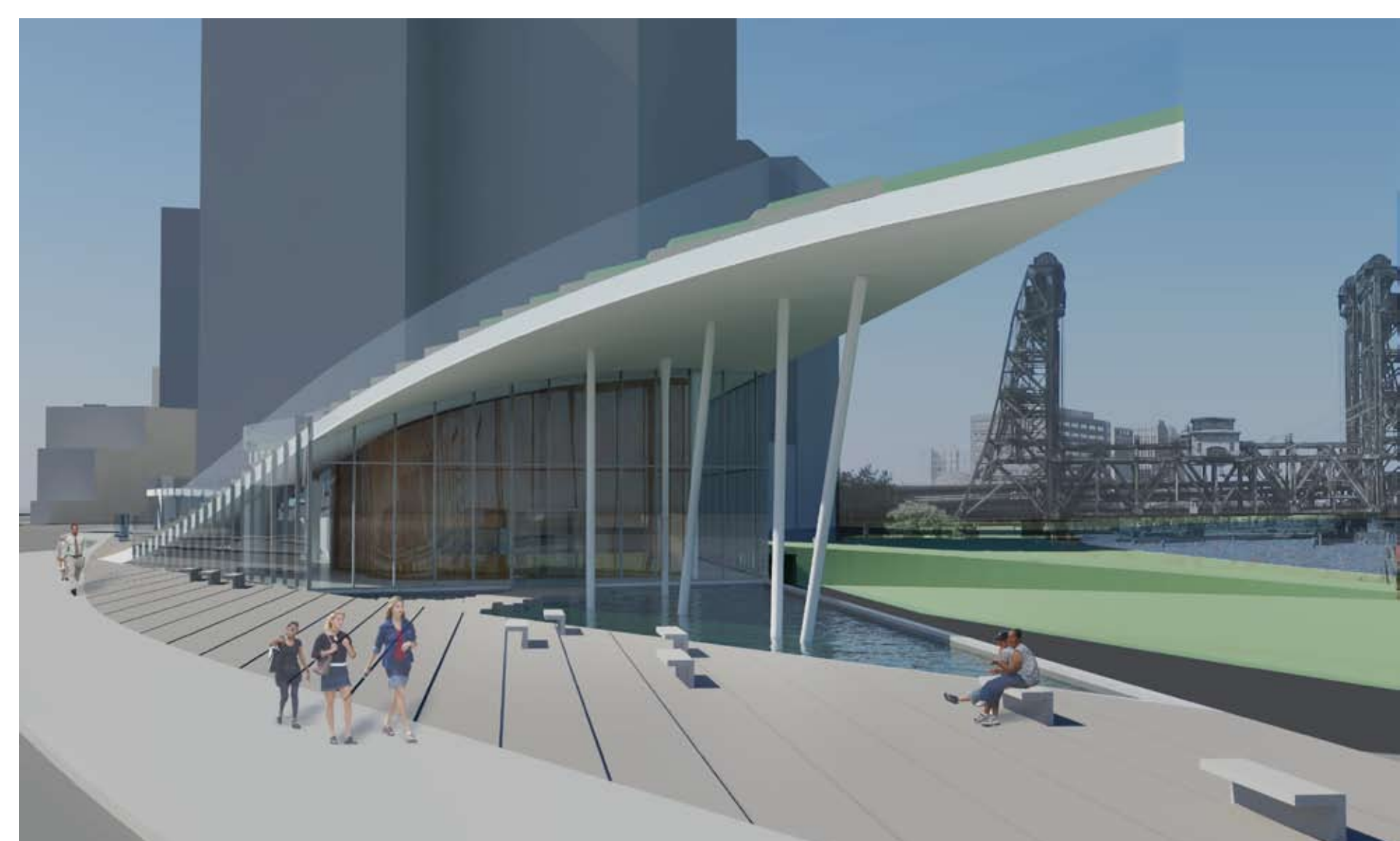
View From Riverfront Park



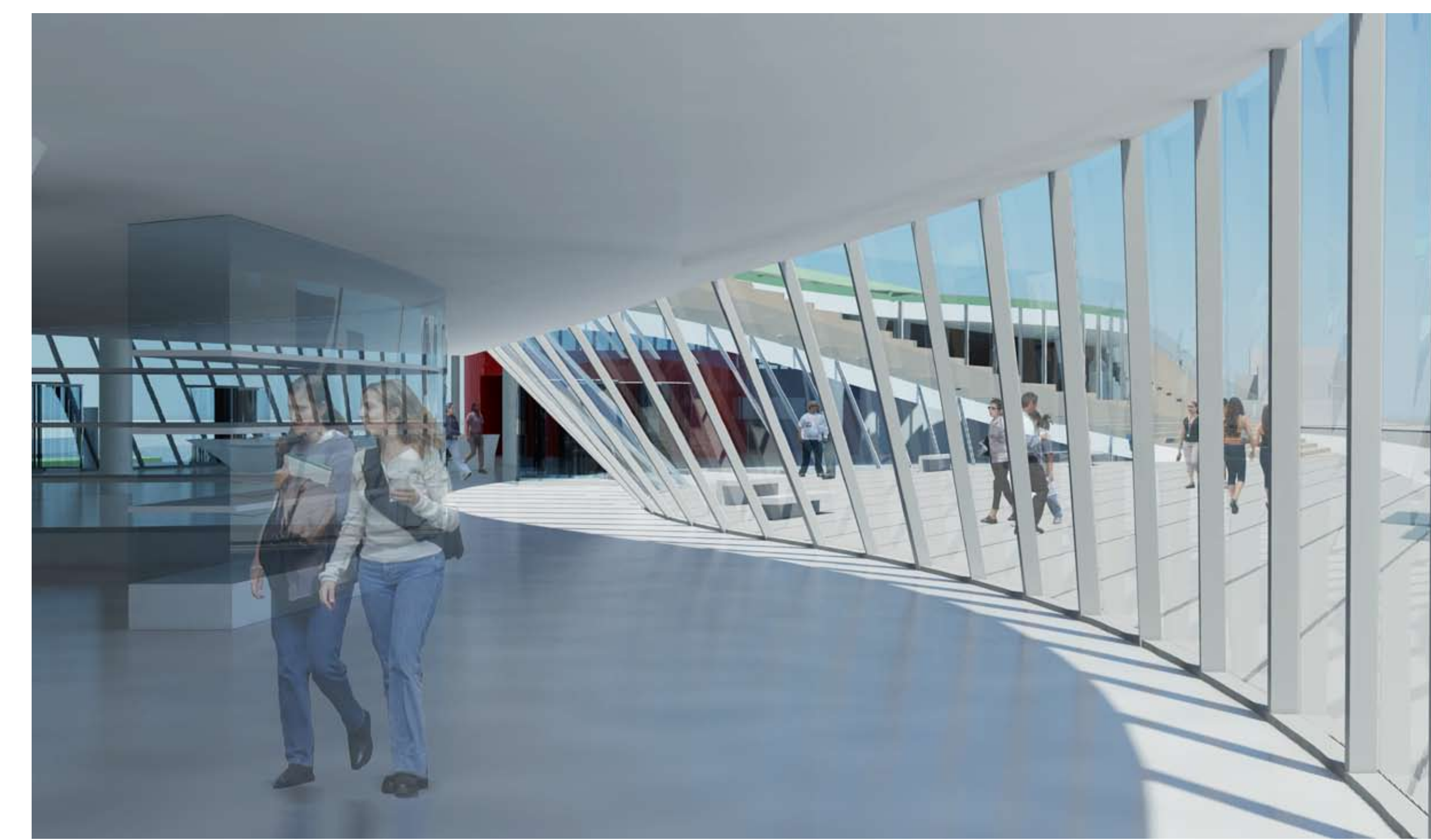
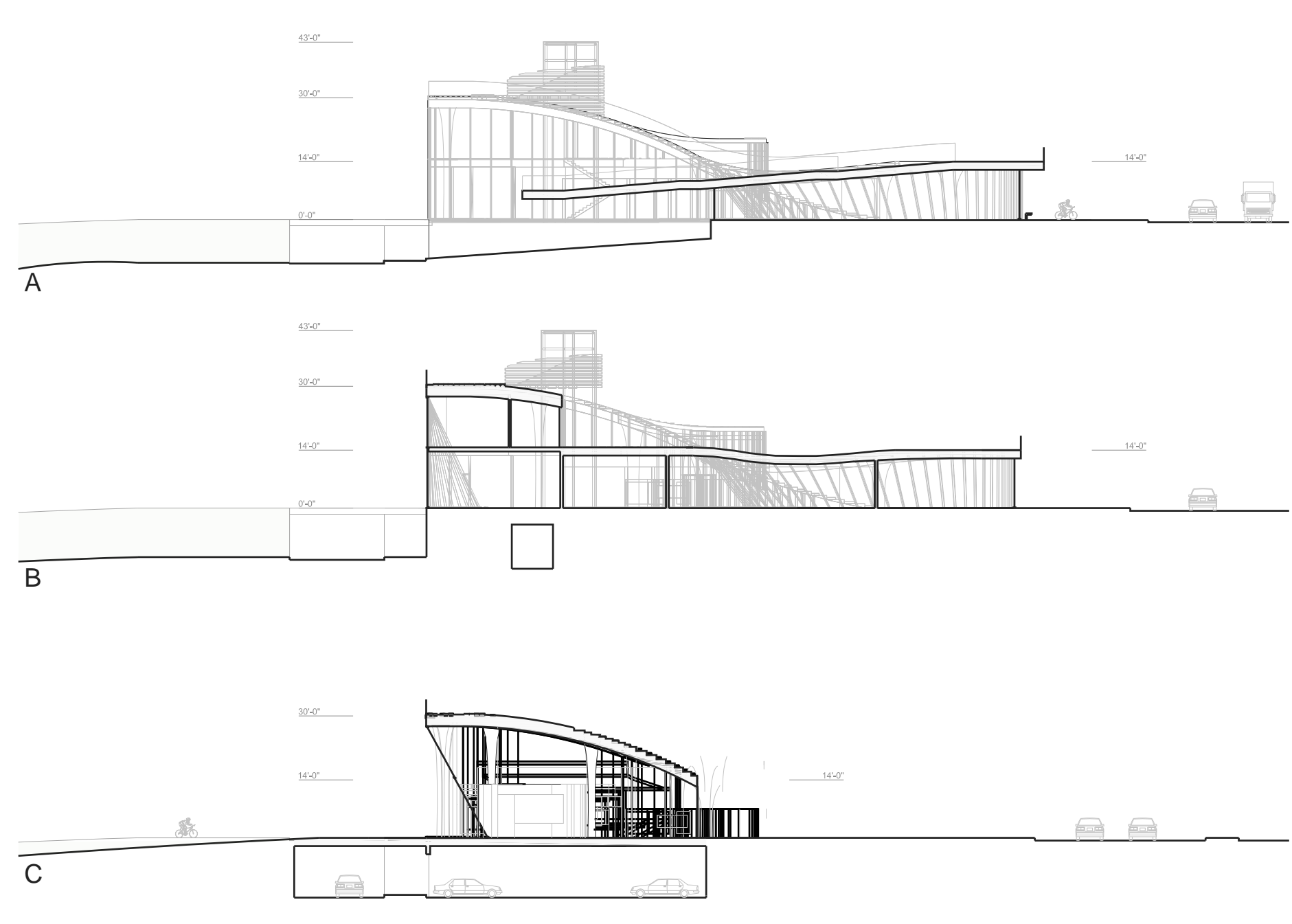
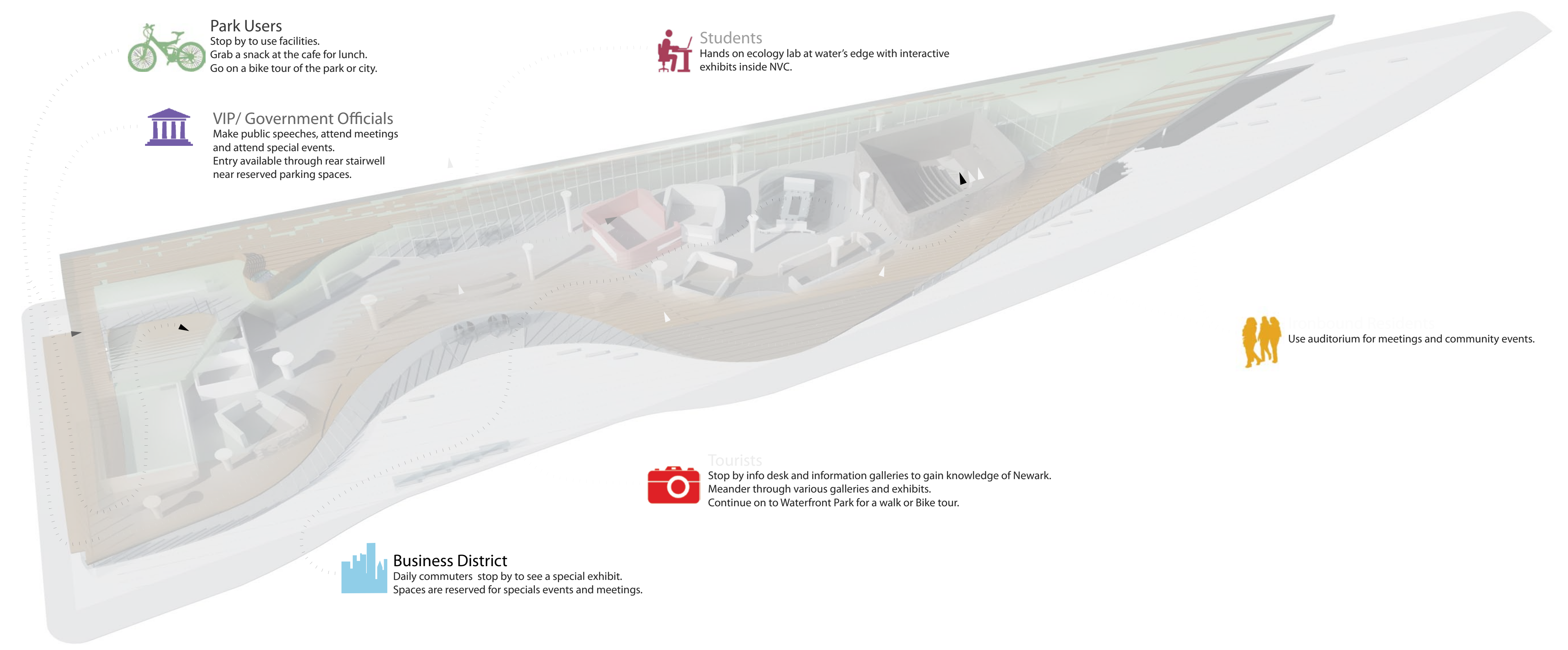
Night View at Market Street



View Looking towards Main Entry and Steps



View Looking towards Roof overhang & Auditorium



Interior view looking towards gift shoppe and out to open plaza



View from information center into gallery and exhibit spaces

